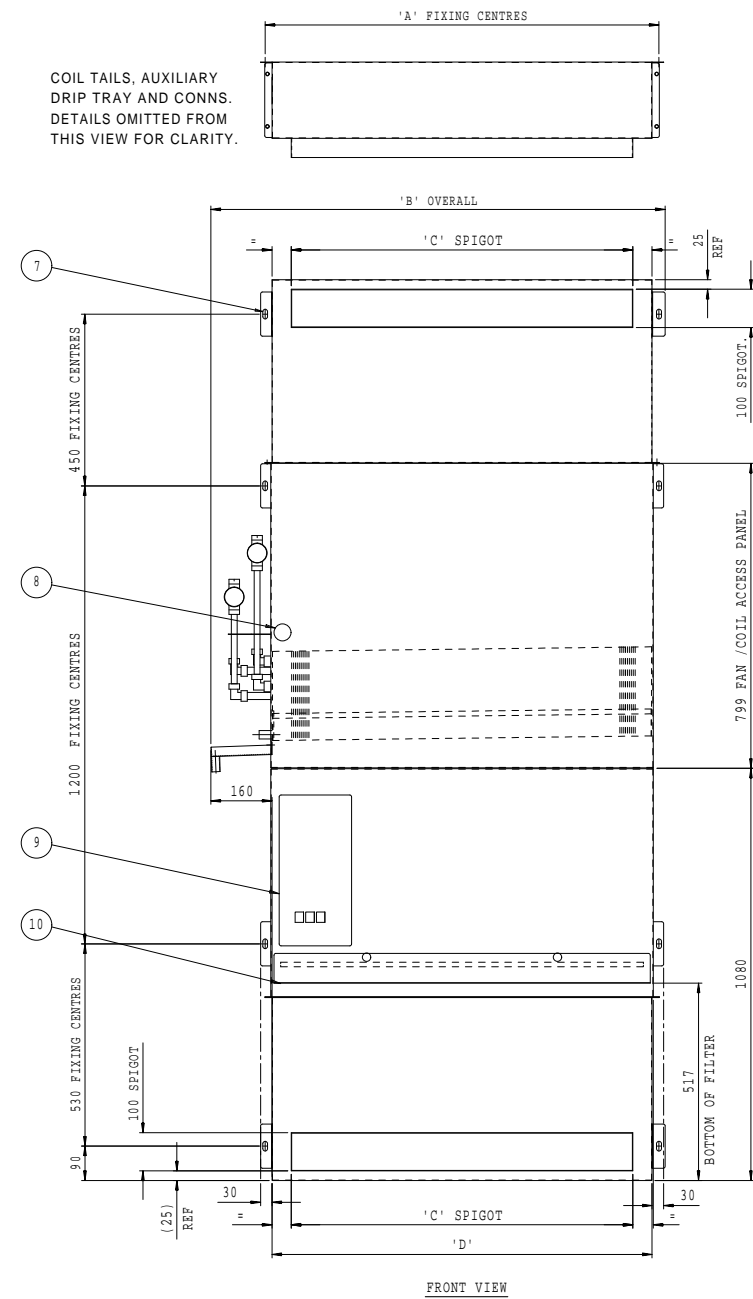


COIL TAILS, AUXILIARY DRIP TRAY AND CONNS. DETAILS OMITTED FROM THIS VIEW FOR CLARITY.



ITEM	DESCRIPTION
1	INLET PLENUM.
2	CABLE ENTRY.
3	UNIT REAR PANEL.
4	AUXILIARY DRIPTRAY C/W $\varnothing$ 22mm DRAIN.
5	COIL DRAINS.
6	DISCHARGE PLENUM.
7	FIXING SLOT 25mmx13mm TYP.
8	COIL VENT ACCESS HOLE.
9	CONTROL BOX, (FRONT ACCESS), C/W FAN ON/OFF SPEED AND TRIM CONTROLS, (SWITCHES NOT REQUIRED ON EC UNITS).
10	SLIDE OUT FILTER.

- NOTES:
- ACOUSTIC LINED UNIT AS STANDARD.
  - LEFT HAND UNIT AS DRAWN, RIGHT HAND UNIT OPPOSITE HAND.
  - GENERAL TOLERANCE ON OVERALL DIMENSIONS +/- 4mm.
  - SITE DESIGN TO BE SUCH THAT THE FANS, COIL, CONTROL BOX, SLIDE OUT FILTER AND VALVES CAN EASILY BE ACCESSED.
  - INLET & DISCHARGE PLENUMS CAN BE REMOVED TO AID HANDLING & INSTALLATION. THEY CAN ALSO BE ROTATED TO ALLOW COMBINATIONS OF FRONT OR REAR INLET & DISCHARGE.
  - COIL PIPEWORK CONNECTIONS  $\varnothing$  15MM (H&C). VALVES SHOWN FOR ILLUSTRATION PURPOSES ONLY

UNIT SIZE	A	B	C	D
01	832	990	695	796
02	1032	1190	895	996
03	1332	1490	1195	1296

REV.	MOD.NO.	DATE	DRN	CHKD	DRAWING TO B.S. 308:PARTS 1,2 AND 3. WELDING TERMS AND SYMBOLS TO B.S. 499:PART 2.	SCALE	N.T.S.	DRAWN	DD	ET ENVIRONMENTAL LTD 47 Central Avenue, West Molesey, Surrey, KT8 2QZ Telephone 020 8783-0033. Fax 020 8783-0140																																							
3	MIN. MOD. TO CLARIFY FAN COIL AND DRAIN CHANGED	23-01-14	MW			MAT'L		DATE	29-05-12	TITLE	GENERAL ARRANGEMENT (SALES) HIGHWALL SS200-D-WV-1.2,3-CH UNIT C/W MODULAR INLET & DISCHARGE PLENUMS.																																						
MODIFICATION					<table border="1"> <thead> <tr> <th>GEOMETRIC CHARACTERISTIC</th> <th>SYM</th> <th>CHARACTERISTIC</th> <th>SYM</th> <th>ALL DIMENSIONS IN MM THIRD ANGLE PROJECTION</th> </tr> </thead> <tbody> <tr> <td>Straightness</td> <td>—</td> <td>Angularity</td> <td>∠</td> <td rowspan="3"></td> </tr> <tr> <td>Flatness</td> <td>∇</td> <td>Run out</td> <td>∕</td> </tr> <tr> <td>Roundness</td> <td>○</td> <td>Position</td> <td>⊕</td> </tr> <tr> <td>Cylindricity</td> <td>⊘</td> <td>Concentricity</td> <td>⊙</td> <td>TOLERANCES UNLESS OTHERWISE STATED</td> </tr> <tr> <td>Profile of a line</td> <td>⌒</td> <td>Symmetry</td> <td>⊞</td> <td>DIMENSIONAL ± 0,5</td> </tr> <tr> <td>Profile of a surface</td> <td>⌒</td> <td>M.M.C.</td> <td>⊞</td> <td>ANGULAR ± 1°</td> </tr> <tr> <td>Parallelism</td> <td>∥</td> <td>Squareness</td> <td>⊥</td> <td></td> </tr> </tbody> </table>	GEOMETRIC CHARACTERISTIC	SYM	CHARACTERISTIC	SYM	ALL DIMENSIONS IN MM THIRD ANGLE PROJECTION	Straightness	—	Angularity	∠		Flatness	∇	Run out	∕	Roundness	○	Position	⊕	Cylindricity	⊘	Concentricity	⊙	TOLERANCES UNLESS OTHERWISE STATED	Profile of a line	⌒	Symmetry	⊞	DIMENSIONAL ± 0,5	Profile of a surface	⌒	M.M.C.	⊞	ANGULAR ± 1°	Parallelism	∥	Squareness	⊥		FINISH		APP'D		JOB	STANDARD
GEOMETRIC CHARACTERISTIC	SYM	CHARACTERISTIC	SYM	ALL DIMENSIONS IN MM THIRD ANGLE PROJECTION																																													
Straightness	—	Angularity	∠																																														
Flatness	∇	Run out	∕																																														
Roundness	○	Position	⊕																																														
Cylindricity	⊘	Concentricity	⊙	TOLERANCES UNLESS OTHERWISE STATED																																													
Profile of a line	⌒	Symmetry	⊞	DIMENSIONAL ± 0,5																																													
Profile of a surface	⌒	M.M.C.	⊞	ANGULAR ± 1°																																													
Parallelism	∥	Squareness	⊥																																														
2	DEV MOD	15-06-12	DD					DATE		DRG.NO.	A1/27436																																						
1	FIRST ISS.	29-05-12	DD					DATE																																									