

select



# Hudevad Optimum



Technical datasheet

**HUDEVAD**  
select

# Key benefits

---



## **Spiral radiator in Scandinavian design**

*Suitable for modern architecture*



## **Large product range**

*Option of four different diameters and with multiple tubes*



## **Available in many colour options**

*Easy to integrate into any interior design colour scheme*



## **Fully welded solution**

*No removable parts making it highly durable and completely tamper-proof*

# Index

---

Description..... 4  
Illustration..... 5  
Dimensions..... 5  
Output ..... 7  
Accessories ..... 11

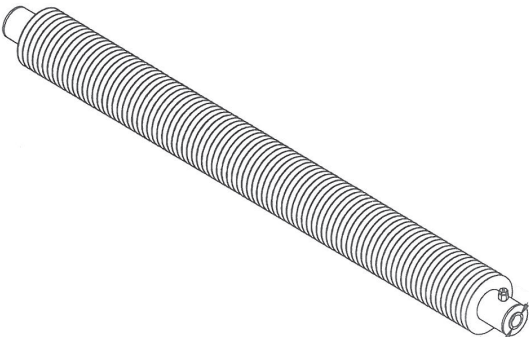
# Description

---

The classic, spiral-ribbed pipe radiator. Optimum provides an unmistakable industrial look, reminiscent of factory and warehouse heating systems during the industrial boom. Made with high-quality Swedish steel, these units are known for their versatility, heating performance, durability and simplicity. Ideal for heating under glazing and loft windows.

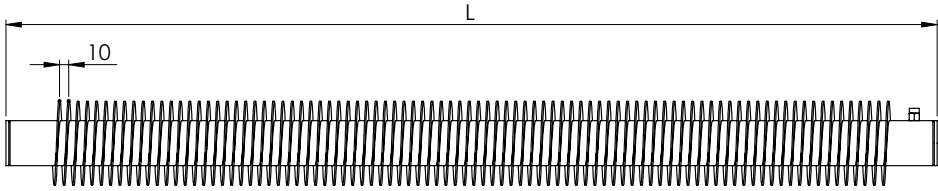
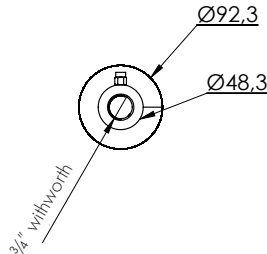
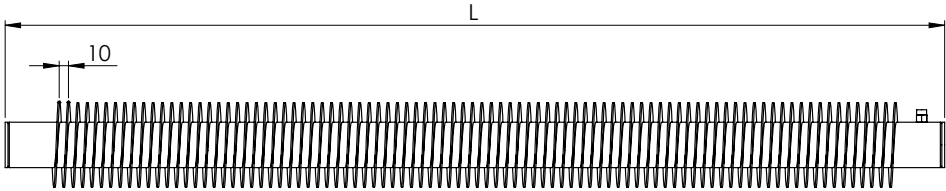
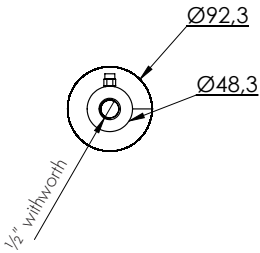
Material	Minimum 1.5 mm. cold-rolled steel acc. to EN 10103/10131
Test pressure	13 bar
Max. Operating pressure	10 bar
Max. Operating temperature	120 °C
Surface treatment	Degreasing, rust-proofing, passivation, priming and powder-coating
Length	400mm-6000mm
Tube size	48.3mm 60.3mm 76.1mm 88.9mm
Fin diameter/ Fin pitch	92.3mm 104.3mm 120 mm 132.9 mm
Tappings	½" or ¾" standard with air vent
Installation	Floor or wall mounted. Standard brackets included.
Optional extras	Optional choice of 2 or 3 pipes.
Colour	RAL 9010 or RAL 9016 according to order specification. Other colours are available. Please see the Hudevad colour catalogue on <a href="http://www.hudevad.com">www.hudevad.com</a> .

# Illustration

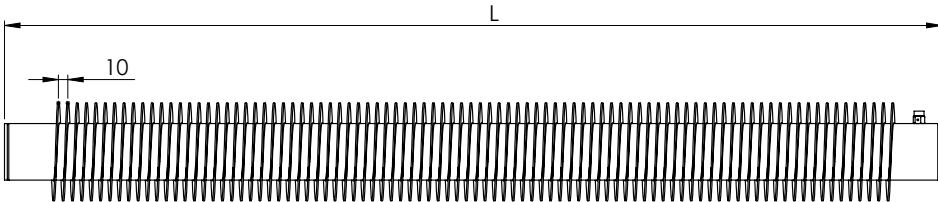
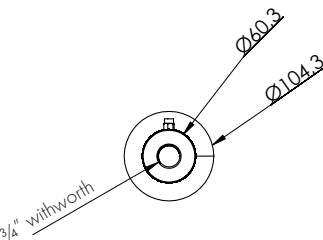
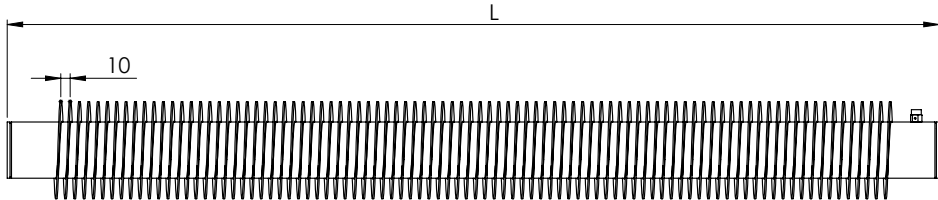
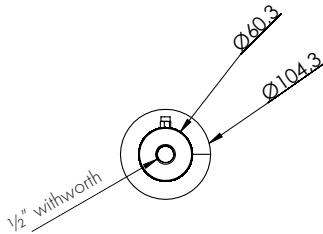


# Dimensions

## Ø 48.3/92.3

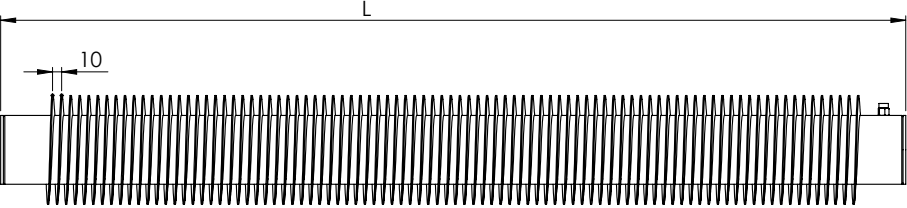
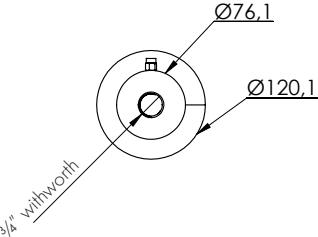
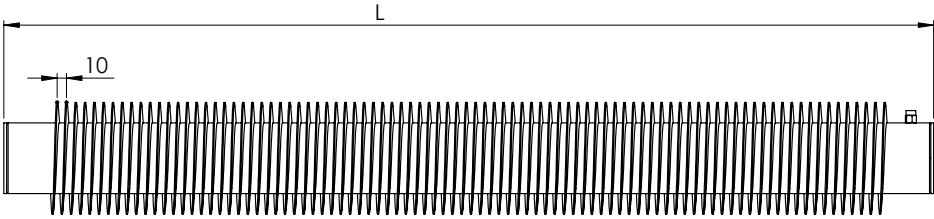
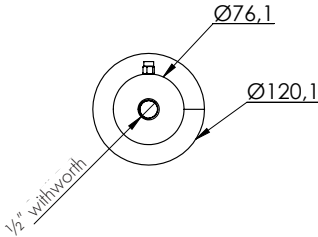


## Ø 60.3/104.3

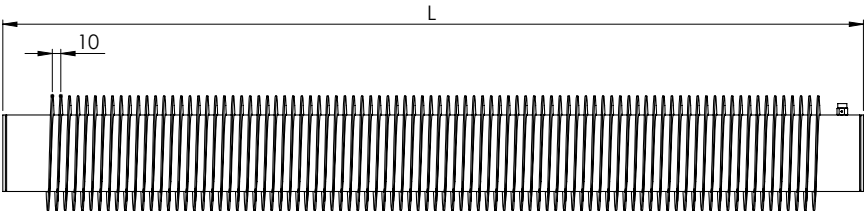
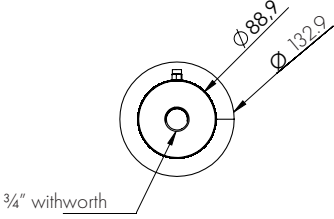
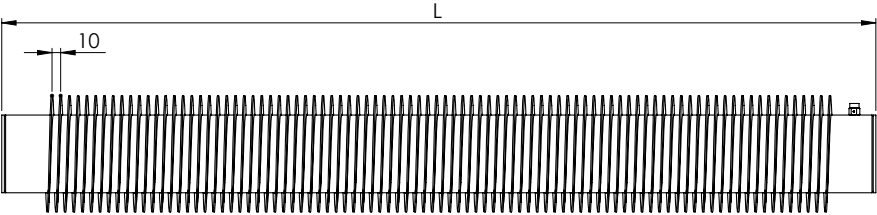
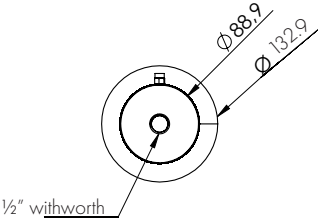


HUDEVAD  
select

Ø 76.1/120.1



Ø 88.9/120.1



HUDEVAD  
select

# Output

Ø 48.3/92.3

Length, mm	Tube size: 48.3mm.	
	Fin diameter/Fin pitch: 92.3mm.	
	Temperature set: 55/45/20	Temperature set: 75/65/20
400	61	120
600	92	179
800	122	239
1000	153	299
1200	184	359
1400	214	419
1600	245	478
1800	275	538
2000	306	598
2200	337	658
2400	367	718
2600	398	777
2800	428	837
3000	59	897
3200	490	957
3400	520	1017
3600	551	1076
3800	581	1136
4000	612	1196

Ø 60.3/104.3

Length, mm	Tube size: 60.3 mm.	
	Fin diameter/Fin pitch: 104.3mm	
	Temperature set: 55/45/20	Temperature set: 75/65/20
400	70	136
600	104	204
800	139	272
1000	174	340
1200	209	408
1400	244	476
1600	278	544
1800	313	612
2000	348	680
2200	383	748
2400	418	816
2600	452	884
2800	487	952
3000	522	1020
3200	557	1088
3400	592	1156
3600	626	1224
3800	661	1292
4000	696	1360



Ø 76.1/120.1

Length, mm	Tube size: 76.1 mm.	
	Fin diameter/ Fin pitch: 120mm	
	Temperature set: 55/45/20	Temperature set: 75/65/20
400	82	160
600	122	240
800	163	320
1000	204	400
1200	245	480
1400	286	560
1600	326	640
1800	367	720
2000	408	800
2200	449	880
2400	490	960
2600	530	1040
2800	571	1120
3000	612	1200
3200	653	1280
3400	694	1360
3600	734	1440
3800	775	1520
4000	816	1600

Ø 88.9/120.1

Length, mm	Tube size: 88.9 mm.	
	Fin diameter/ Fin pitch: 120mm	
	Temperature set: 55/45/20	Temperature set: 75/65/20
400	88	170
600	131	254
800	175	339
1000	219	424
1200	263	509
1400	307	594
1600	350	678
1800	394	763
2000	438	848
2200	482	933
2400	526	1018
2600	569	1102
2800	613	1187
3000	657	1272
3200	701	1357
3400	745	1442
3600	788	1526
3800	832	1611
4000	876	1696

# Accessories

## Brackets

