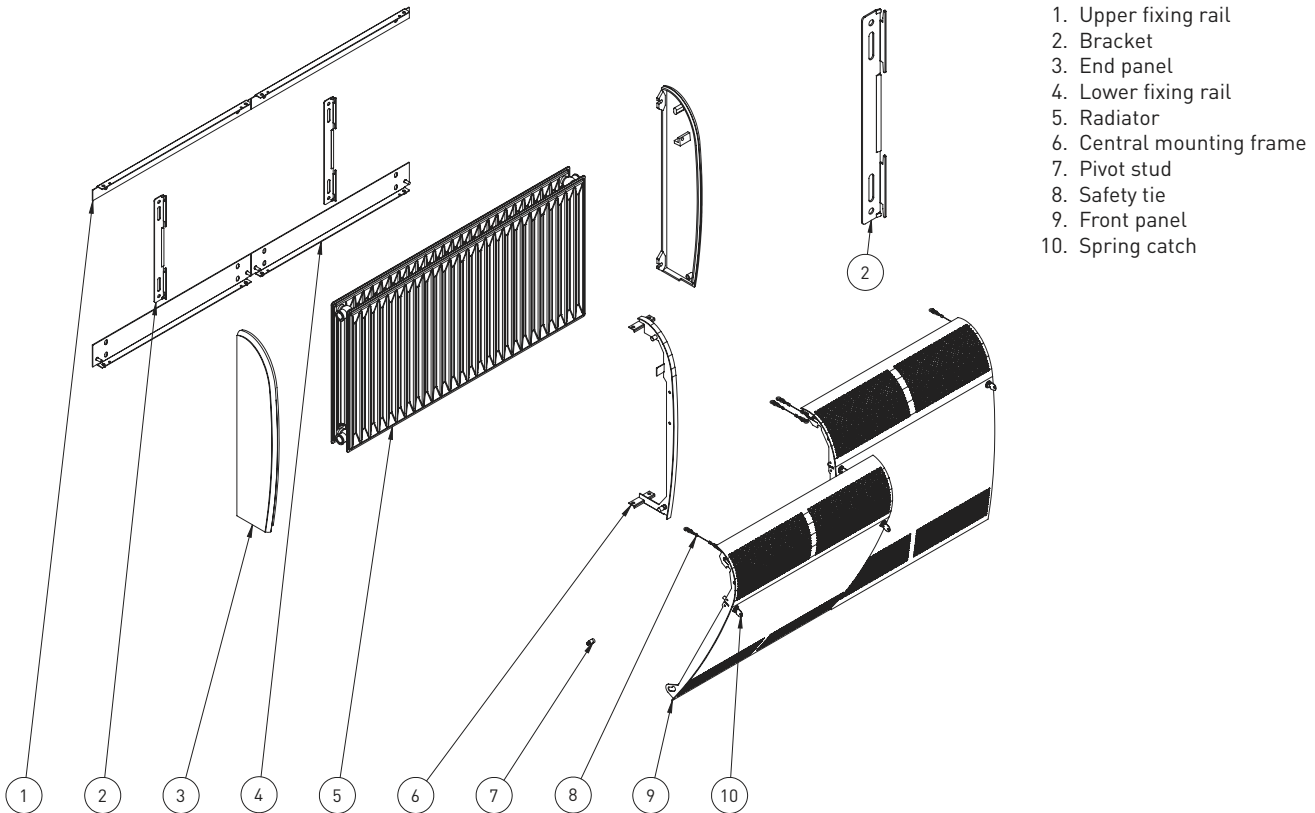


LST Care - product description and material



1. Upper fixing rail
2. Bracket
3. End panel
4. Lower fixing rail
5. Radiator
6. Central mounting frame
7. Pivot stud
8. Safety tie
9. Front panel
10. Spring catch

Features

- » Unique, aesthetically pleasing appearance
- » Strong and durable with 2 mm steel front and cast iron or steel end panels
- » Smooth curved design for personal safety
- » Tamper and vandal proof by means of lockable catches
- » Conceals and protects pipework and valves
- » Casing tilts for access to controls and for cleaning
- » Integral stamped grilles facilitate cleaning and prevent dust accumulation
- » Maximum flexibility with individual casing, multiple casings or wall-to-wall system
- » Complies with NHS Estates Health Guidance Note (March 1998)*

*Under certain design parameters the top grille might exceed 43°C. Contact Hudevad Office for further details

Description

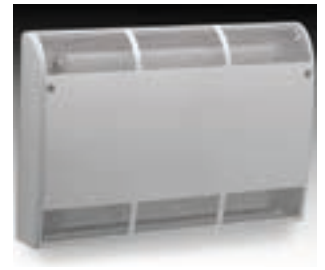
Casing system comprising a curved front panel from 2 mm steel with perforated air inlet and outlet grilles and cast iron or steel end panels. Can be used as individual units with one front panel, as a composite system with 2 or more units joined together or as a wall-to-wall system. Casings can be mounted either at floor level or above floor level. Delivered with panel fixing rails and, where required, with central mounting frames to join the front panels. Front panels tilt forward for easy access to radiators and valves and are secured with tie wires.

Front panels can be provided as unperforated stretched panels to create a specific length of system or to complete a wall-to-wall system.

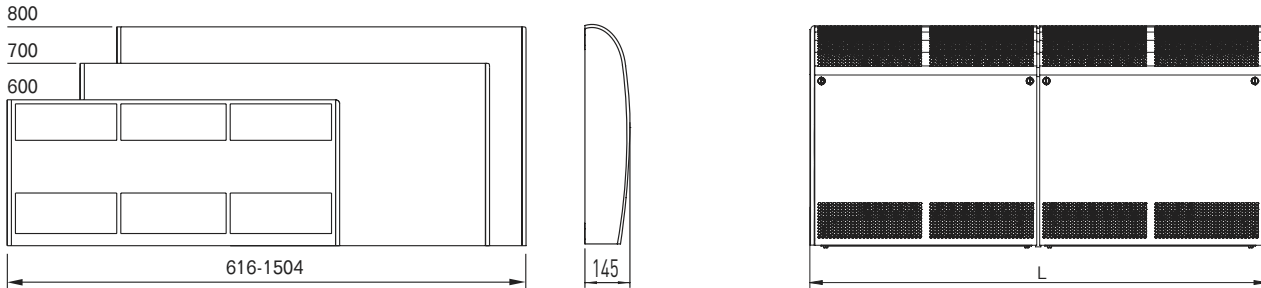
Material

Front panel: 2 mm steel to DIN 1614, EN 10111
End panel: Cast iron or steel panel

LST Care



LST Care - height, length and depth



LST Care - output and weight

Combinations of panels and total weight

LST Care output W 75°/65°/20°C			
Casing length, mm (L)	Height 600 mm	Height 700 mm	Height 800 mm
	Type 21		
616	295	348	396
912	590	696	793
1208	885	1043	1189
1504	1180	1391	1586
1800	1475	1739	1982
2096	1770	2087	2379
2392	2065	2435	2775
2688	2262	2668	3040
2984	2558	3016	3437
3280	2853	3363	3833
3576	3148	3711	4230
3872	3443	4059	4626
4168	3738	4407	5023

Panel length, mm	No. of panels	Total weight, kg		
		Height 600 mm	Height 700 mm	Height 800 mm
616	1	34	38	41
912	1	45	50	54
1208	1	55	61	68
1504	1	64	73	82
1800	2	75	86	96
2096	3	86	99	111
2392	2	95	110	124
2688	3	105	123	138
2984	2	116	134	152
3280	3	126	146	167
3576	3	136	159	180
3872	3	147	171	194
4168	3	156	182	208

NOTE: Special non standard lengths can also be made to order, please contact Hudevad for more details

Length Individual units: 616, 912, 1208 and 1504 mm
 Composite systems: 1800 mm and upwards (no length restriction). For precise total lengths and casing combinations, see table above.
 Radiator lengths: Max. radiator length is total length of casing ÷ 300 mm. However, max. radiator length will depend on tappings and valves

Height Casing: 600, 700 and 800 mm

Depth 140 mm

Tappings Radiators with side or bottom tappings can be used. When sizing, space for pipework and valves must be considered

Mounting Wall mounted at floor level or above floor level

Colour Powder coated in white RAL 9010. Gloss 70
 Option: Painted in other standard RAL and BS colours
 Anti bacterial paint is used as standard on the LST cover

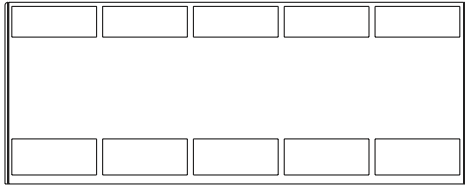
Options Cut-out in end panel for pipework



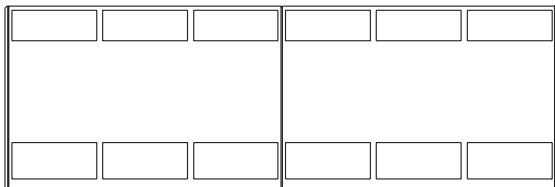


LST Care - view of different lengths and extended panels

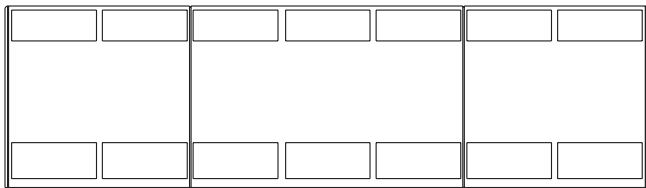
LST Care panel length 1504 mm



LST Care panel length 1800 mm

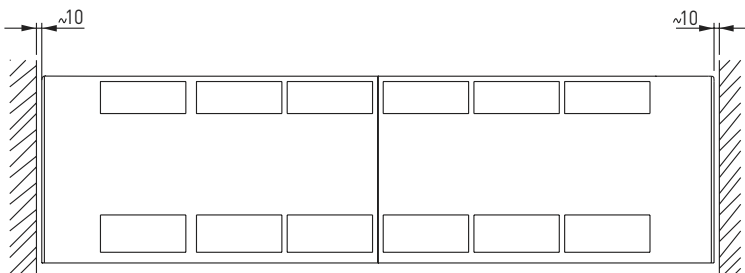


LST Care panel length 2096 mm



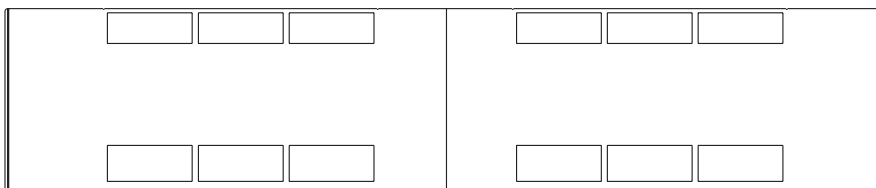
By combining extended (unperforated) panels with normal panels any required total system length can be achieved, in increments of 2 mm

LST Care panel length 1800 mm and extended panels



NOTE: For wall-to-wall systems a shadow gap of approx. 10 mm should be allowed.

It is possible to use a dummy panel to fill a gap between live systems, see below.

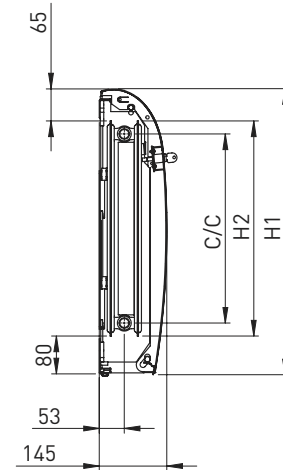
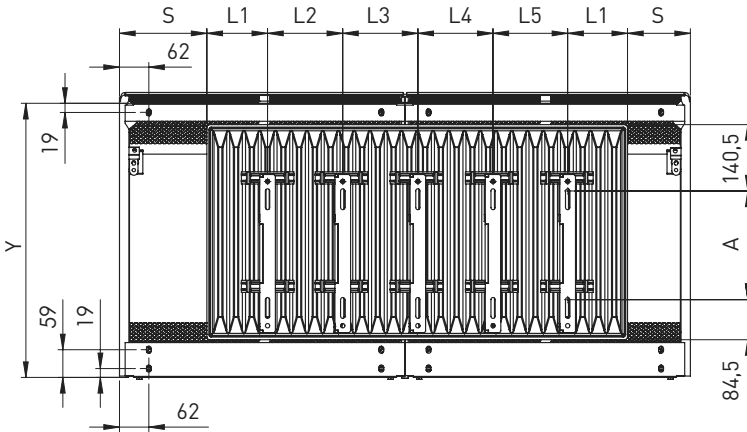


Subject to technical modifications and typographical errors – and to changes in the product range. Find the latest updates on www.hudevad.com.

LST Care

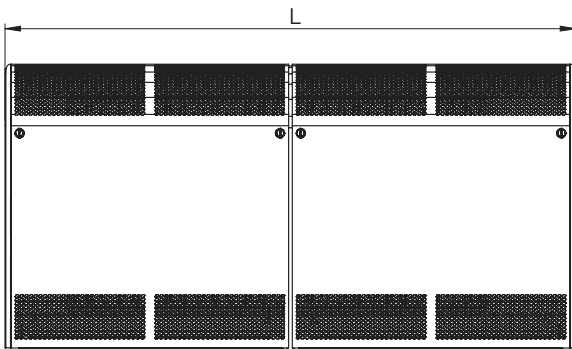


LST Care - height, length and depth



Dim.	Type 21		
H1	600	700	800
H2	455	555	655
C/C	400	500	600
A	230	330	430
Y	572	672	772

Position of brackets							
L, mm	Qty.	L1	L2	L3	L4	L5	S
616	2	64	163				Min. 175 mm (flow side)
912	2	162	267				
1208	2	162	567				
1504	2	262	667				
1800	2	362	767				
2096	3	362	533	533			
2392	3	362	667	700			
2688	3	362	767	800			
2984	3	362	933	933			
3280	4	362	700	767	700		
3576	4	362	833	800	833		Min. 125 mm (return side)
3872	4	362	933	900	933		
4168	5	362	767	767	768	768	



All radiators for LST Care will be supplied with 1/2" tappings at A, B, C, D, unless otherwise specified.

Built-in valve with remote sensor

Application: For use where valve is to be concealed behind front panel for appearance or to prevent unauthorised use or tampering.

Dimensions: Radiators must be ordered with side tappings. To accommodate pipework and valves a minimum 175 mm gap is required between radiator and casing at flow and a 125 mm gap, at return.

Other valve types: Other valves can be accommodated, please consult Hudevad.

Hole for built-in valve

Application: For use where access to valve is required without opening casing.

Dimensions: Radiators must be ordered with side tappings. To accommodate pipework and valve 175 mm gap is required.

Construction: End panel is provided with hole to accommodate protruding remote sensor/adjuster from Herz.